



# Colonial Village



*A place you are proud to call home.*

**JAN  
2011**



**COLONIAL  
VILLAGE**

**2075 Rustad Lane  
Mounds View, MN  
55112**

**Office: 763-786-3498**

**Emergency:**  
(651) 274-2909  
(651) 274-2579

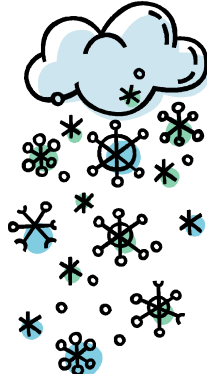
**Sales: 651-274-2909  
Carol Langenfeld  
Community Manager**

**Check us out  
on Facebook!**

**facebook**

Colonial Village now has a facebook page! Check it out and "like" us for updates in your neighborhood!

## ***THANK YOU ALL FOR YOUR PATIENCE!***



Our record breaking December snowfall has been a challenge to each and everyone of us. Thank you all for your hard work in keeping your driveways clear. We continue to move snow to improve accessibility. Some of you may want to pull some snow off your roof, especially if it is threatening to block a furnace or sewer stack or beginning to create an ice dam. If your toilet isn't flushing well, it could be a covered sewer vent. Removing as little as 2' of snow around the edge of your roof can help with the ice dams. It is our recommendation that you don't try to climb on your roof, but use a roof rake from the ground or a ladder against the home. We will get through this!

### **GARBAGE SERVICE UPDATE**

Colonial Village is changing garbage service to the wheeled carts. This won't cost you more, in fact we think you'll like it much better than our current system. Carts will be delivered later in January. Watch your mail for a separate mailing on all the details. As always, don't hesitate to call the office with questions.



**New Homes  
Now**

**Delivered!**

**2072 Rustad**

**& 5738 Squire Lane**

Two beautiful sectional homes have been delivered. One of these could be yours if you act fast! We have great financing and take trade-ins!  
Call Today!



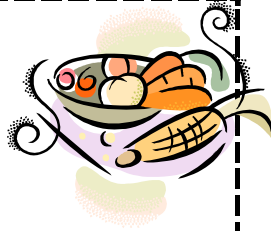
### **CHRISTMAS TREE DISPOSAL**



Fresh Christmas trees may be set at the curb for disposal on January 13th and January 20th. The hauler will come with a separate truck for pick up. Please remove any decorations, tinsel or tree bags.

## VEGETABLE SOUP

6 cups broth - vegetable or chicken  
Cooking spray  
2 carrots, peeled and diced  
1 large onion, diced  
4 teaspoons garlic (from a jar or substitute four cloves minced garlic)  
1/2 cabbage, chopped (or use a bag of slaw, the biggest chunks you can find vs the fine, don't skip the cabbage for it somehow makes the soup)  
1/2 pound frozen green beans  
2 tablespoons tomato paste  
1 teaspoon dried basil  
1 teaspoon dried oregano  
1 teaspoon kosher salt  
1 large zucchini, diced



Bring the broth to a boil in the microwave. (This is a time-saving tip that can be skipped if there's no hurry.) Spray a Dutch oven with cooking spray and heat on MEDIUM HIGH. Add the carrots, onion and garlic and cook for about 5 minutes. Add all the remaining ingredients EXCEPT the zucchini and bring to a boil. Cover, reduce the heat to MEDIUM and simmer for about 15 minutes or until the beans are tender. Add the zucchini and cook until the zucchini are tender. Serve and enjoy!

## Contest winner-Blia Vang!

Blia has won a \$50 gift certificate for Gas. You can be entered to win too! Just pay your Jan. site fee by Jan 3rd. Next month: Cub Foods!



## "Cuppa Coffee Social"



Join your neighbors on the first Wednesday of the month for a "cuppa" coffee social at the Garden Room (next to the Colonial Village office)

Our next gathering: Wednesday, Jan. 5th  
10:00am Please join us!

## Classified Ads

**On-Call Snow Shoveling** by Elijah  
Driveway, deck and walkway service \$10-\$18  
Experienced Teen 612-875-4848 Call or Text

**Snow shoveling:** Lorenzo 763-898-9675  
Andrew 763-568-3008

**Snow blower service:** Steve 651-633-4611

**Snow removal: Roof and driveway:** Call  
Scott 651-263-1025

*Colonial Village does not endorse any service or product.*

## Ask Vince....

*the Colonial Repair Guy!*



**Q:** *Do I need to be concerned about the snow around my gas meter?*

**A:** *Yes! Especially this year with our record snow amounts. There is a vent on the meter that must be kept free of snow and ice or the meter could become potentially dangerous or can lead to loss of gas service and therefore heat.*

*Gently remove the snow and ice from the meter and pipes. Carefully shovel around the meter, but avoid using a snow blower. If you are concerned that the meter's regulator may be blocked, call Xcel Energy at 1-800-895-2999.*

*Remember, your home's gas meter is on the back side of your home. The gas meter in your yard on the driveway side of your home is your neighbor's (except for corner homes that may have 2 meters in the yard)*